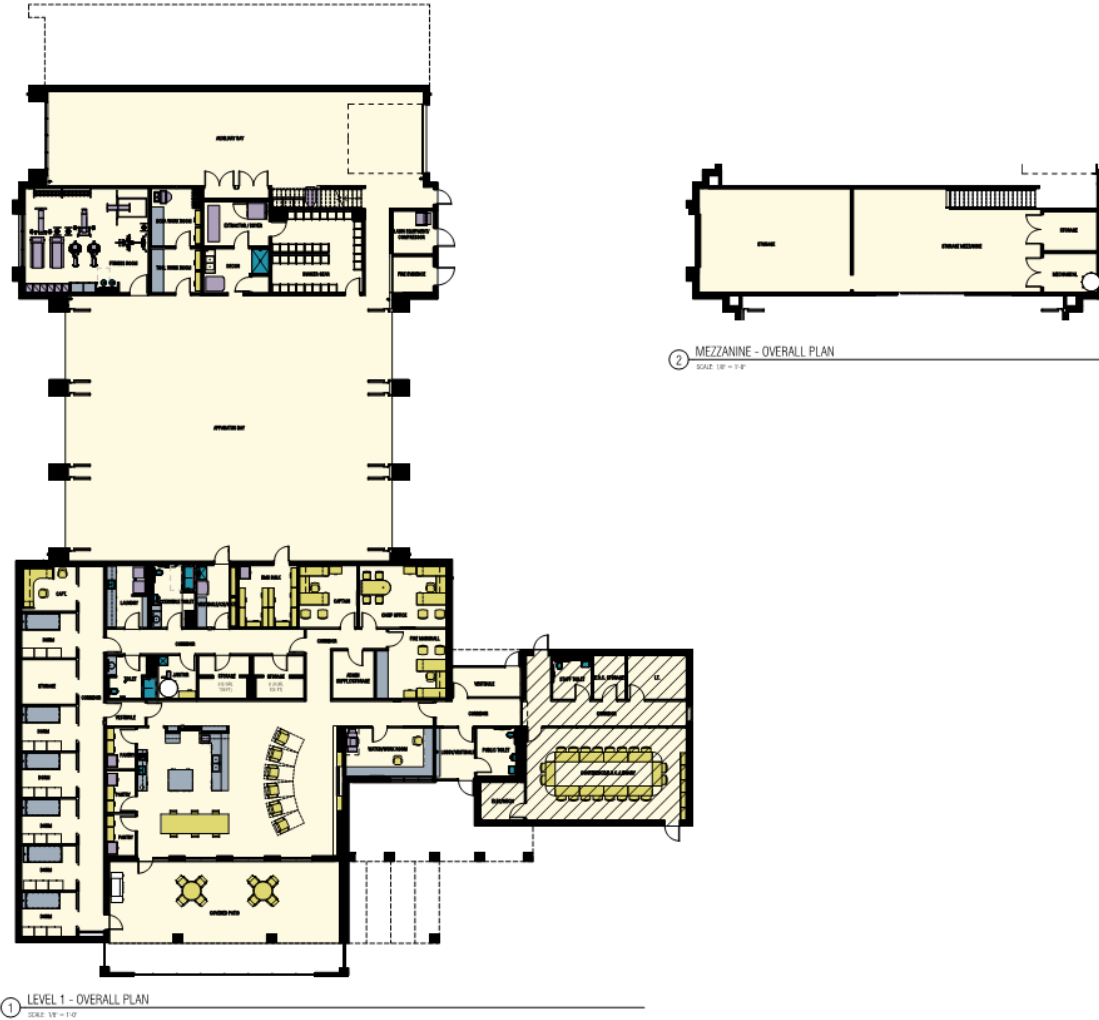




Fairview Fire Station No. 1



08.08.2018 Design – Floor Plan



6 South Elevation
1/8" = 1'-0"

5 West Elevation
1/8" = 1'-0"

4 North Elevation
1/8" = 1'-0"

3 East Elevation
1/8" = 1'-0"

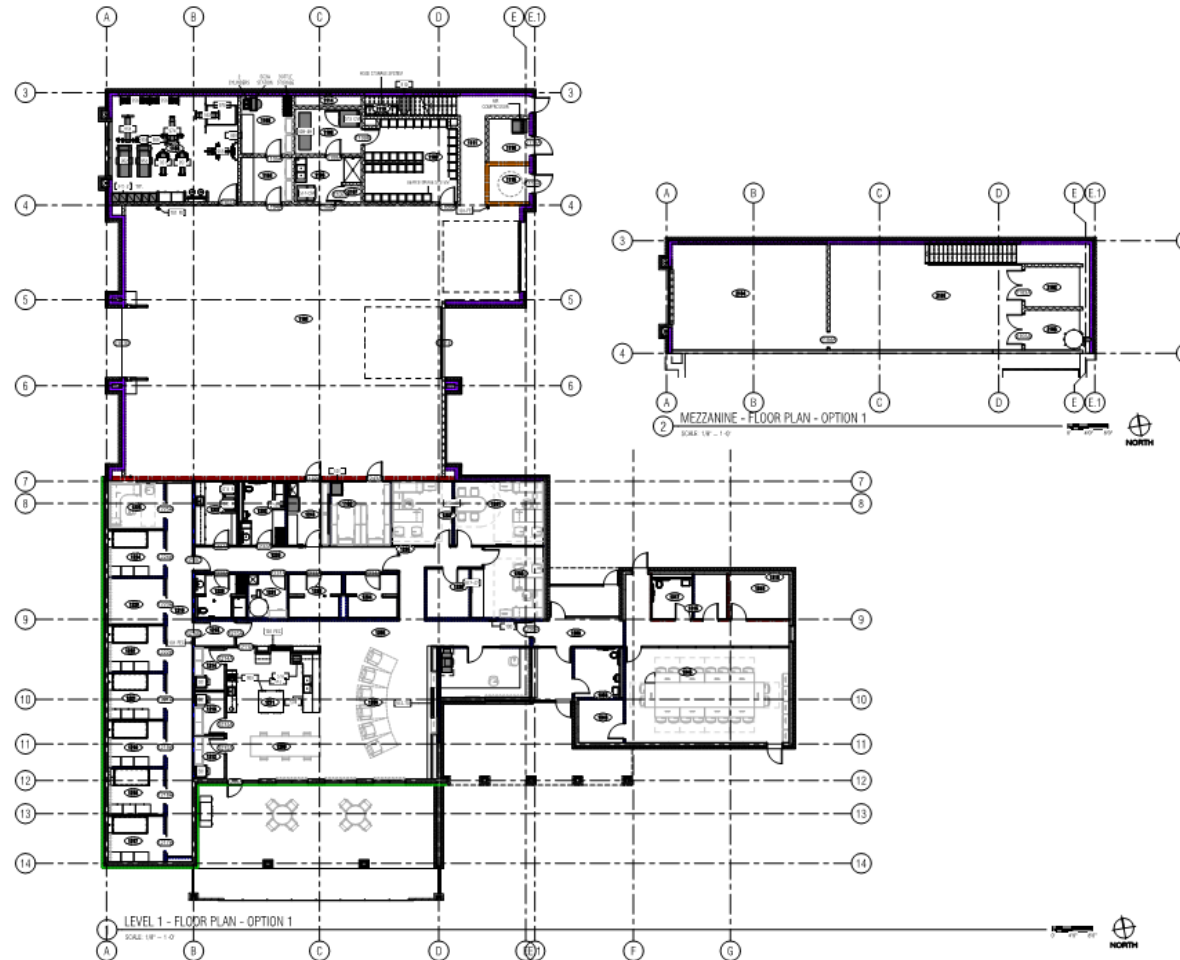
08.08.2018 Design – Elevations



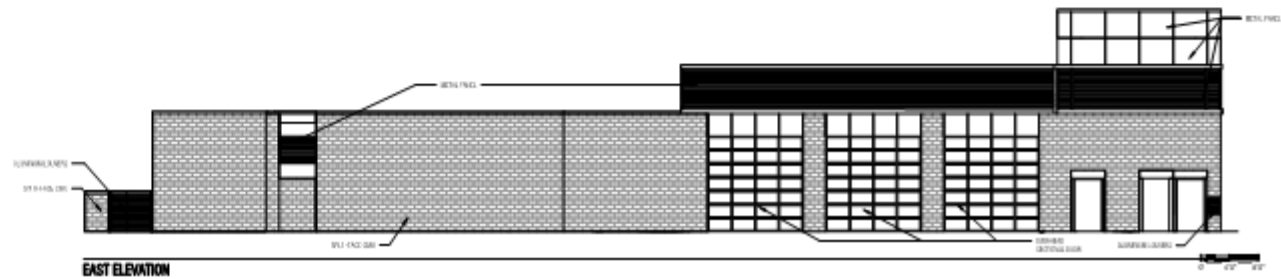
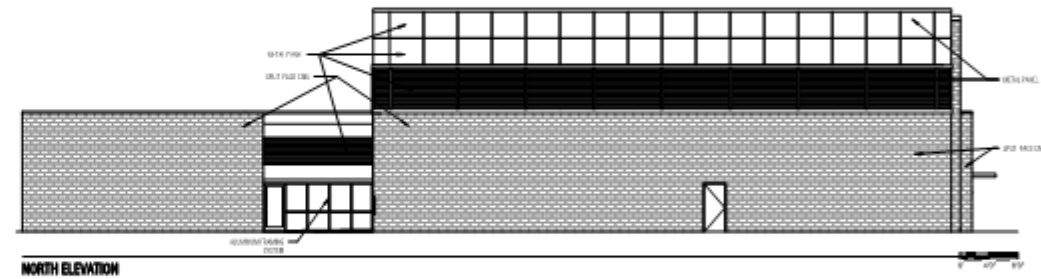
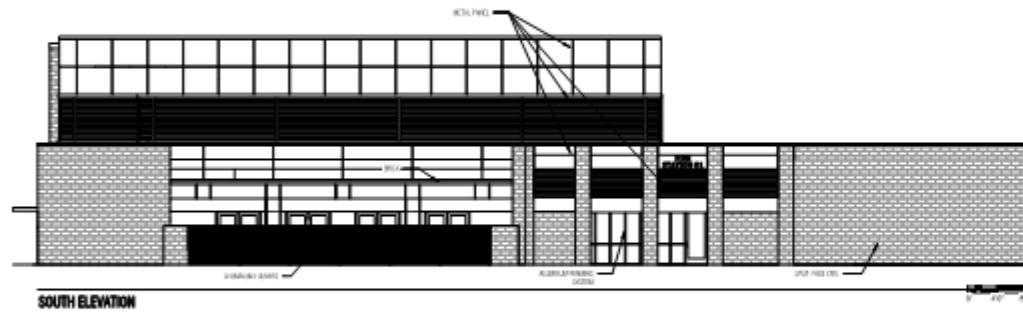
Revisions since 08.08.2018 Design

- Change (3) Folding Doors to Overhead Doors at Apparatus Bays
- Delete 4'-0" of Bay Length at Apparatus Bays
- Delete Northern Auxiliary Bay & Lengthen (1) Southern Bay
- Delete Hardening of Generator
- Delete EOC & Replace with 16 Person Administrative Conference Room (Option 2)
- Revised Grading and Site Plan
- Reduced Site Paving Scope of Work
- Reduced Landscaping Scope of Work
- Hydromulch Grass Areas in lieu of Sod
- Remove Audio & Video Equipment and Installation from Construction Costs
- Replace Sloped Metal Roofing with Flat TPO Roofing
- Revise Exterior Skin (Split-face CMU and Metal Panels in lieu of Brick and Metal Panels)

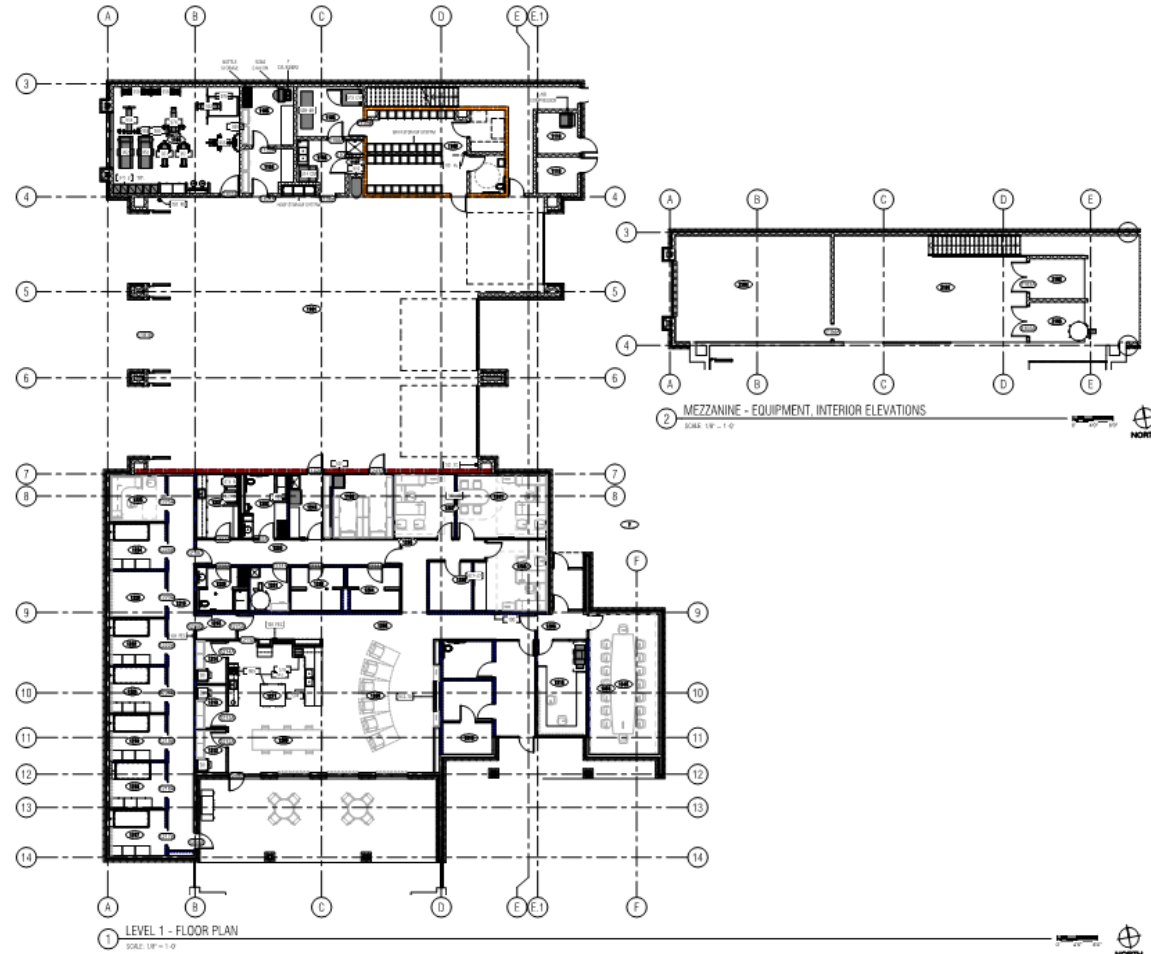
Option 1 – Floor Plan



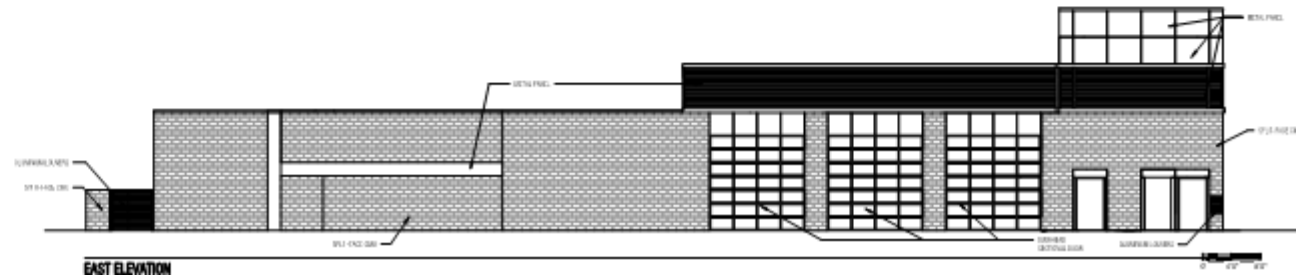
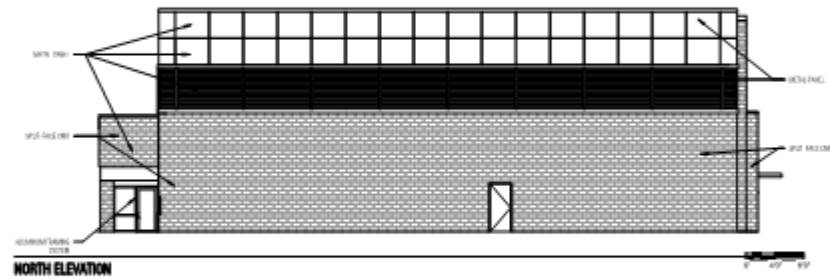
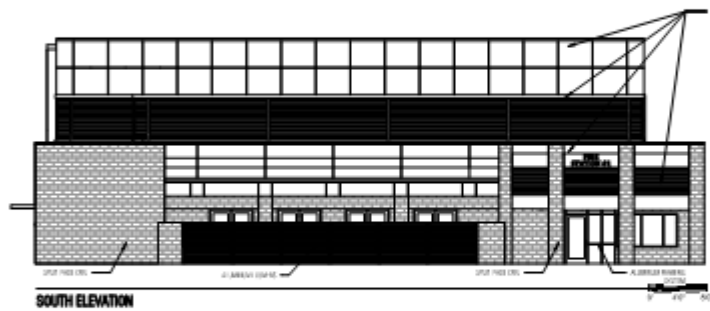
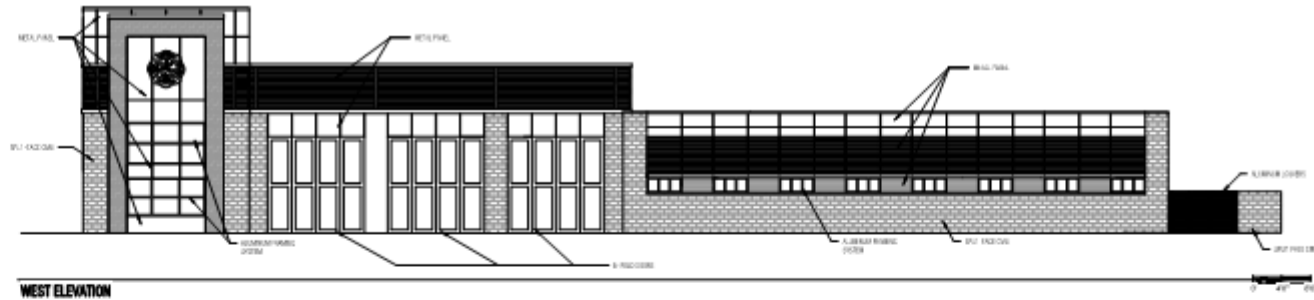
Option 1 - Elevations



Option 2 – Floor Plan



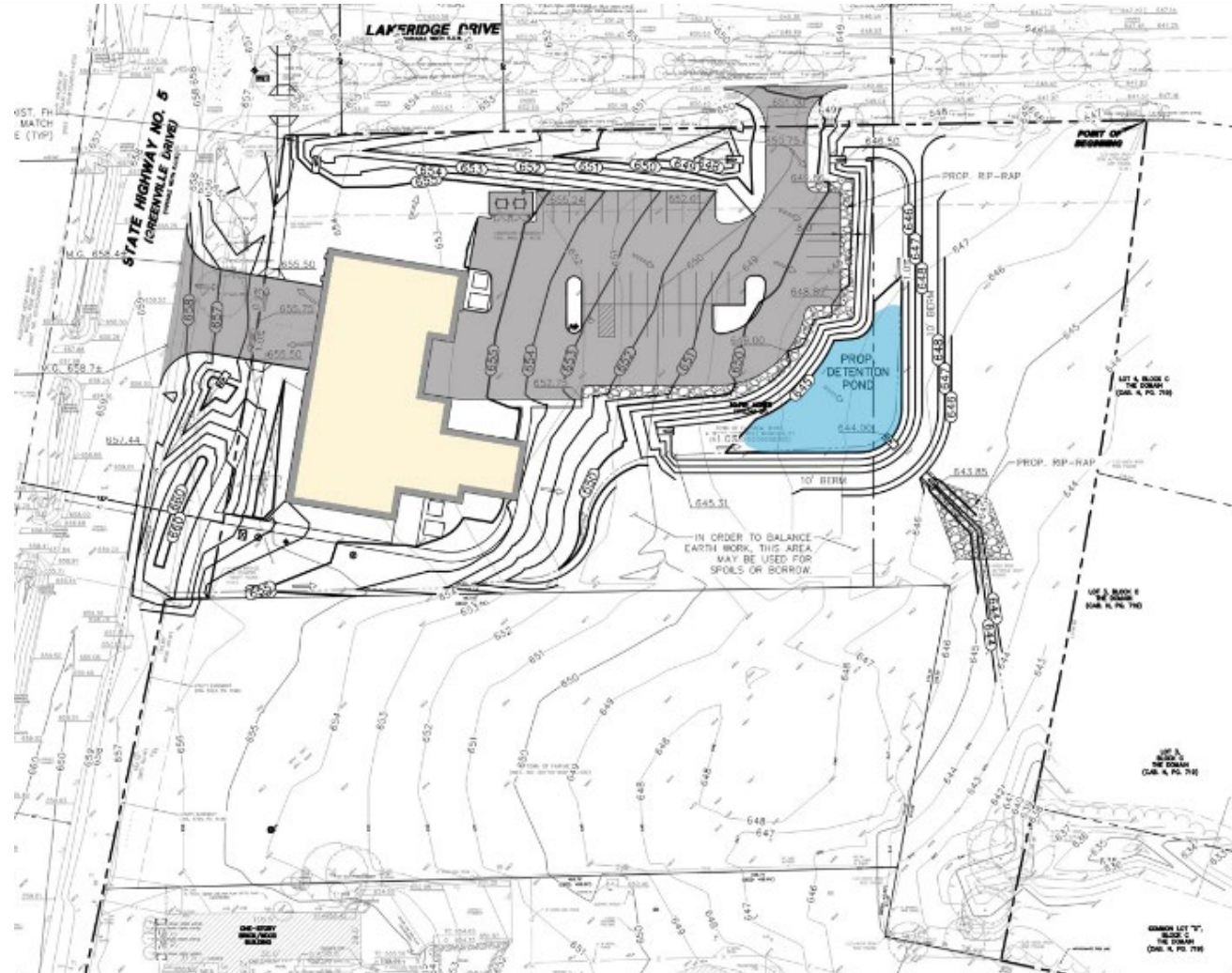
Option 2 - Elevations



Renderings



Revised Site Plan



Options 1 & 2 Construction Costs

08.08.2018 Design –

Total Building SF –	16,414
Total Construction Cost –	\$9,036,373
Total Construction Cost/ SF –	\$550.53

Option 1 –

Total Building SF –	13,311
Total Construction Cost –	\$7,421,956
Total Construction Cost/ SF –	\$557.58

Option 2 –

Total Building SF –	12,879
Total Construction Cost –	\$7,240,078
Total Construction Cost/ SF –	\$562.16

Options 1 & 2 Total Project Cost

Town of Fairview
 Pricing Options
 January 9, 2019

Option	Construction Cost	A/E & Owner Contingency 9%	Supplemental Design Fees	Indirect Cost	Total
8/8/2018	9,036,373	813,274	261,470	124,367	10,235,484
1	7,421,956	667,976	250,000	160,000	8,499,932
2	7,240,078	651,607	250,000	160,000	8,301,685