

# FAIRVIEW

JANUARY 2026

# TOWN NEWS







#### Specialties:

- \* Make-Ready and Punch Lists
- \* Hang ceiling fans & light fixtures
- \* Install crown and baseboards
- \* Hang drapery, mirrors & blinds
- \* Install kitchen & bath pulls/knobs
- \* Interior and trim painting
- \* Textured drywall repairs
- \* Light electrical and plumbing
- \* Refinish Front Entry Doors

Call or email me today, let me  
make your home beautiful!

**Fred Rackers**

**214-707-2758**

[fred@besthandyman.net](mailto:fred@besthandyman.net)

[www.besthandyman.net](http://www.besthandyman.net)

We are open 8:30-5:00 Monday thru Thursday and 8:30-2:00 Friday



## HEARING SERVICES OF MCKINNEY

Hearing Aid Fittings, Maintenance and Repairs

Bluetooth Shooters Plugs

Assistive Devices, Hearing Evaluations

Custom Ear/Swim Protection

Hearing Aid Consultation • 25+ years experience

**972-838-1300 • [www.hearinmckinney.com](http://www.hearinmckinney.com)**

3600 Eldorado Pkwy #B1 • McKinney, TX 75070



**AMERICAN  
PATIO ENCLOSURES**  
ADDED PROTECTION FROM WEST NILE  
PRIVACY • SHADE

**CALL FOR A FREE  
ESTIMATE TODAY**

**817.605.8881**

**FREE  
50" TV**  
with purchase  
of patio enclosure

**[AMERICANPATIOENCLOSURE.COM](http://AMERICANPATIOENCLOSURE.COM)**

# WE'RE HERE FOR YOU

## Town of Fairview

372 Town Place  
Fairview, TX 75069

## Main Phone Line

**972-562-0522**

Fax: 972-548-0268

[www.fairviewtexas.org](http://www.fairviewtexas.org)

## Hours of Operation

Monday-Friday 8:00 a.m. - 4:30 p.m.

Fairview Town Hall will be closed on Thursday, Dec. 25,  
Friday, Dec. 26, Thursday, Jan. 1, and Monday, Jan. 19.

## IMPORTANT NUMBERS:

### EMERGENCY: 911

Daytime Non-Emergency Police: **972-886-4211**

Evening Non-Emergency Police: **972-547-5350**

Jeff Bell, Fire Chief: **972-886-4238**

Travis Green, Fire Marshal: **972-886-4232**

After Hours Water Emergencies: **972-886-4229**

Utility Billing: **972-886-4242**

Republic Services (trash/recycling/bulk pickup): **972-422-2341**

Code Enforcement: **972-562-0522**

Smoke Detector Help Email: [smokedetector@fairviewtexas.org](mailto:smokedetector@fairviewtexas.org)

Smoke Detector Help VM: **972-886-4239**

## Submit editorial feedback to

[TownNews@fairviewtexas.org](mailto:TownNews@fairviewtexas.org)

## To Place an Advertisement in this Publication

### Please Contact:

### Hope Floats Creative

**972-396-8855**

[info@HopeFloatsCreative.com](mailto:info@HopeFloatsCreative.com)

[www.HopeFloatsCreative.com](http://www.HopeFloatsCreative.com)

ADVERTISING DISCLAIMER: This disclaimer applies to both the Town of Fairview (the "Town") and Hope Floats Creative ("HFC"), collectively referenced as "we" or "us." We do not recommend or endorse any product or service advertised in this newsletter, nor have we reviewed the legitimacy, efficacy, qualifications or validity of any product or service advertised in this newsletter. You are strongly encouraged to obtain additional information regarding any product or service that you may be interested in from independent and reliable sources, such as applicable state licensing agencies, the Better Business Bureau, or other reputable consumer-reporting organizations. We do not make any representations, explicit or otherwise, concerning any advertiser on this site, their content or any products or services which they offer. Reference to any specific commercial product, process, or service by trade name, trademark, or otherwise does not represent endorsement or recommendation by us.

# MESSAGE FROM THE MAYOR

## Looking Ahead: Fairview's Vision for the New Year

**A**s we begin a new year, many of us make resolutions to refocus our priorities and set meaningful goals. In that same spirit, I want to share how the Town of Fairview is planning for the year ahead guided by our Vision, Mission, Core Values, and Strategic Focus Areas, all adopted by the Town Council.

### Our Vision

Fairview is committed to being *"a premier place to live and work with a unique and vibrant quality of life."* Everything we do in the coming year is anchored in advancing that vision while protecting the small-town charm that makes Fairview special.

### Our Mission

We strive to promote high-quality economic and community development, embrace our natural features, communicate openly with our residents, and deliver exceptional municipal services through a professional, well-trained workforce.

### Our Core Values

We are dedicated to Integrity, Caring, Responsiveness, Innovation, Trust, and Excellence—principles that shape how we serve, plan, and lead.

### Strategic Focus Areas for 2026

This year, we continue to prioritize:

- Fiscal Responsibility
- Infrastructure
- Public Safety
- Economic & Community Development
- Community Engagement

These focus areas guide the work we will undertake throughout the coming year.

### Managing Growth & Investing in Infrastructure

Fairview continues to experience growth, and with that comes the responsibility to plan wisely and invest in the future.

### Roadway Improvements

- **Fairview Parkway** will be completed from Latham Drive and connect directly with Medical Center Drive in McKinney, improving mobility for residents and strengthening our regional connectivity.
- **Latham Drive** will undergo reconstruction to enhance safety and support long-term traffic needs.

### Smart Water Technology

The Town is moving forward with the installation of smart water meters, enabling residents to better monitor and manage their water usage and helping the Town improve service responsiveness and reduce water loss.



John Hubbard

**As we move into the new year guided by a clear vision and strong values, I am optimistic about what we will accomplish together.**



**Town of Fairview**  
372 Town Place  
Fairview, TX 75069  
972-562-0522

*Continued to page 4*

*Continued from page 3*

### Regional Traffic Coordination

Fairview continues to work closely with Collin County to address traffic challenges and manage the high volume of motorists traveling through our community. Coordinated planning and improved traffic flow remain essential priorities as our region grows.

### Responsible Land Use

This year, the Town will also review and update, as needed, the Town's zoning ordinance to ensure we maintain our vision. This process helps protect Fairview's character, support quality development, and ensure alignment with our long-term goals.

### Enhancing Public Safety & Community Accessibility

The Town Council is reviewing opportunities to expand and modernize the Police Department, creating a more accessible and community-focused facility.

Public safety remains central to our mission and to maintaining Fairview's exceptional quality of life.

### Strengthening Community Engagement

Councilman Pat Sheehan often reminds us that Fairview's greatest asset is our "strength of community." That spirit drives our efforts to expand opportunities for resident involvement.

This year, we encourage more residents to:

- Serve on citizen boards and commissions
- Participate in the Citizen Police Academy
- Attend town meetings, workshops, and community events

Your involvement ensures that Fairview's future reflects the values and priorities of its residents.

### Commitment to Excellence in Town Services

This year's goal is to continue to deliver outstanding town services at the greatest possible value to our residents.

The following goals remain integral components of our work and our budget:

- Continued implementation of the Town's 10-year capital plan
- Advancing our strategic goals
- Maintaining our ability to recruit and retain exceptional employees who deliver high-quality service every day

Investing in our people, our infrastructure, and our long-term planning ensures that Fairview remains strong and resilient.

### Looking Forward Together

As we move into the new year guided by a clear vision and strong values, I am optimistic about what we will accomplish together. Fairview continues to improve and plan with purpose, and your involvement is what truly makes our community exceptional. I look forward to all that we will achieve side by side in the year ahead.

*Dr. John Hubbard*

Mayor, Town of Fairview  
Mayor@FairviewTexas.org

## EXPERT SKIN CARE FOR ALL AGES

**Conveniently located  
on Dallas Parkway at  
Magnolia Dermatology**

### Medical Dermatology

- Acne & rosacea management
- Eczema, psoriasis & dermatitis
- Skin infections
- Hair loss evaluation & treatment
- Pediatric dermatology
- Full body skin exams
- Mole checks & biopsies
- Treatment of warts, cysts & rashes
- Toenail fungus laser treatment

### Cosmetic Dermatology

- Botox & Dysport
- Dermal fillers
- SkinPen® Microneedling
- HydraFacial MD®
- Chemical peels
- Laser Genesis (Cutera Xeo)
- IPL Photofacial
- Laser hair removal
- Brown spot removal
- Vein treatment

### Surgical Dermatology

- Skin cancer screenings
- Excision of benign & malignant lesions
- Cyst removal
- Cosmetic mole removal

**CALL TO  
SCHEDULE**

**972-668-4237**

13192 Dallas Parkway  
Suite 620  
Frisco, TX 75033

**GRAVES**  **DERMATOLOGY**  
**AT MAGNOLIA DERMATOLOGY**







## Fairview Again Demonstrates Generosity in Peanut Butter Drive

Fairview showed up in force in the North Texas Food Bank's annual Peanut Butter Drive held in September 2025.

All told, more than \$355,000 and more than 85,000 pounds of peanut butter was raised during the drive. Fairview had the most per capita giving of any participating municipality, and Heritage Ranch held onto its title as the top neighborhood in Collin County in peanut butter donations.

"The peanut butter drive is about more than jars collected – it's about coming together to make sure children in our community don't go hungry," said Trisha Cunningham, President and CEO of the North Texas Food Bank. "We're deeply grateful to every person and organization that made this year's drive such a success."



## Town Council Meeting

At the Tuesday, Dec. 2, 2025, regular Town Council meeting, the Council:

- Approved the following items on the consent agenda:
  - a. Minutes of the Nov. 4, 2025, regular meeting of the Town Council
  - b. An amended interlocal agreement with Collin County for animal control services
  - c. An amended interlocal agreement with Collin County for animal shelter services
- Received staff reports and the quarterly investment report
- Received an update on activity of the Fairview Airport Impact Review Task Force
- Denied a proposal related to Town Hall operating hours
- Allocated votes for the Collin County Appraisal District Board of Directors election
- Appointed Pamela Sailor as chair of the Public Art Committee
- Authorized the Town Manager and the Town Attorney to enter into agreements and/or take action to prevent or remedy damage or difficulties caused by drainage problems or diversion of surface water in the area of Country Club and Stoddard roads near the border of the Town of Fairview and the City of McKinney. Such action may include pursuing legal proceedings.

**CHESTNUT SQUARE**
HERITAGE VILLAGE EST. 1974






Celebrate Community • Preserve History • Inspire the Future

[www.chestnutsquare.org](http://www.chestnutsquare.org)



AmeriCar Services

24 Hour Airport Service
Friendly • Safely • Timely



**Prices Start at \$98.00\***

Sedans • SUVs • Buses for 14 & More Passengers

\*Airport fees, tolls and gratuity are not included.

972-365-7303 • [www.americarservices.net](http://www.americarservices.net)



TOWN OF FAIRVIEW, TEXAS

# ALARM

## Permits Due

Must be renewed by **Jan. 31** every year

**\$50** annual residential permit

**\$100** annual commercial permit

**25% late fee** assessed **after Jan. 31**

Alarms without a permit may result in a **fine of up to \$250** plus court costs per offense

Includes **all alarms** that summon police or other emergency services **+** **all unmonitored alarms** that **emit an audible signal that can be heard outside the structure**

Covered under **Fairview Ordinance 2022-24**



**SCAN TO RENEW  
NOW**



**CONTACT US**

972-562-0522

[Alarm@FairviewTexas.org](mailto:Alarm@FairviewTexas.org)





# May General Election Information

## The next Town of Fairview

General Election will be held on Saturday, May 2, 2026, to elect members for Town Council Seats 2, 4 and 6.

## Important Dates

### Monday, January 5, 2026:

First day for application packet pickup. Candidate packets will be available for pickup at Town Hall, or you may email the Town Secretary at [TownSecretary@FairviewTexas.org](mailto:TownSecretary@FairviewTexas.org) to receive a candidate packet electronically. Completed original applications must be filed with the Town Secretary, and electronic packets will not be accepted.

**Wednesday, January 14, 2026:** The first day to file an application for a place on the ballot.

**5 p.m. Friday, February 13, 2026:** Last day for a candidate to file an application for a place on the ballot for May 2, 2026 General Election.

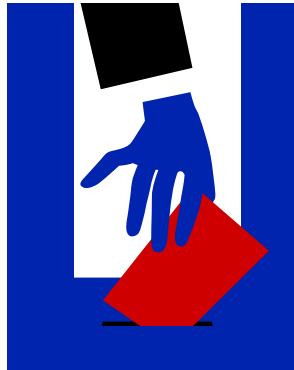
**Thursday, April 2, 2026:** Last day to register to vote in the May 2, 2026 Election.

**Monday, April 20, 2026:** First day of Early Voting by personal appearance.

**Tuesday, April 28, 2026:** Last day of Early Voting by personal appearance.

**Saturday, May 2, 2026:** Election Day. Polls will be open from 7 a.m. to 7 p.m.

To check your voter registration status or register to vote, visit [CollinCountyTX.gov](http://CollinCountyTX.gov) or scan the adjacent QR code.



WE OFFER **MORE** THAN OTHER SENIOR LIVING COMMUNITIES.

**MORE FOR YOUR MONEY**  
**MORE PEACE OF MIND**  
**MORE AMENITIES AND SERVICES**

Learn **MORE** reasons to choose retirement living at Highland Springs.®

Call 1-888-208-2174 or visit  
**HighlandSpringsCommunity.com**  
for your FREE brochure.

  
**Highland Springs**  
BY ERICKSON SENIOR LIVING®

North Dallas  
[HighlandSpringsCommunity.com](http://HighlandSpringsCommunity.com)



1508756\_FTN

## Join Us On Stage!

THEATRE CLASSES and PRODUCTIONS

**NORTH TEXAS  
PERFORMING ARTS  
FAIRVIEW**



- ★ Camps
- ★ Productions
- ★ Private Lessons
- ★ After-School Classes
- ★ Birthday Parties and More



## Holiday Closures

Town Hall will be closed:

**New Year's Day — Thursday, January 1**

**Martin Luther King Jr. Day — Monday, January 19**

*Bulk trash and brush will not be collected on Jan. 1.*

*Trash collection schedules will not be affected by Martin Luther King Jr. Day.*

# Senior and Disabled Mobility Service for Fairview Residents

## Did you know?

**D**enton County Transportation Authority (DCTA) provides transit service for Fairview residents who are 65 and older or who have a qualifying disability through a program called Collin County Rides.



The DCTA Collin County Rides service features a dedicated fleet of standard and wheelchair-accessible minivans to transport residents



where they need and want to go within Collin County on an appointment basis.

Qualified riders can use the RideDCTA mobile app (available in the Apple iOS App Store and through Android-Google Play) to make appointments.

Riders can also use the DCTA Collin County Rides online portal as a one-stop solution to confirm their enrollment, enter their payment information and schedule trips.

Additionally, users can make an appointment by calling the DCTA Customer Service Center at **940-243-0077**. Reservations can be made by phone from 8 a.m. to 5 p.m. Monday through Friday, or from 8 a.m. to 3:45 p.m. on Saturdays.

New customers must first set up an account. Going online is the easiest and most efficient way to apply for the program.

Applicants may also go to the website to download and complete a form to submit to DCTA Customer Service. Instructions are on the downloadable form.

Keep these service parameters in mind:

- Collin County Rides operates from 6 a.m. to 6 p.m. Monday through Friday, except for major holidays. (Please note all trips must be started and ended within the service hours. The service does not operate on nights or weekends.)
- Riders can make reservations up to seven days prior to a trip, but trip appointments must be made at least the day before traveling. (Same day appointments are not available.)
- Trips are available to permanent residents of Fairview who are registered in the system.
- Trips must begin or end in Fairview and will be limited to locations within Collin County.
- Trips must be paid for using a credit or debit card via your online account. (No cash, checks or money orders will be accepted.)

**KEVIN KERNAN**  
CELL 214-564-8935 KMK@WARPMAIL.NET  
HR OWNER 2002 HOA BOARD 2007-11



**RE/MAX**  
Town & Country

VOTED: BEST REALTOR  
IN DFW FOR LAST 12 YRS  
2014-2025

**#4 RE/MAX AGENT IN DFW & #16 IN TX**  
MEMBER OF RE/MAX CHAIRMAN'S CLUB

MLS RANCH SALE PRICES: JAN - NOV 2025			
HOME TYPES	MIN SALES PRICE	MEDIAN SALES PRICE	MAX SALES PRICE
ALL VILLAS:	\$380K	\$396K	\$409K
HOMES: <2400 SF	\$395K	\$450K	\$650K
2400 SF & UP	\$440K	\$620K	\$765K
GOLF COURSE: <2400 SF	\$570K	\$598K	\$650K
2400 SF & UP	\$686K	\$731K	\$795K

VISIT MY WEBSITE  
KEVINKERNAN.RMXTC.COM  
FOR MORE PHOTOS, PRICING, & HOMES



Each RE/MAX Office is Independently Owned and Operated.  
This is not intended to solicit property already listed.

## EXCLUSIVELY SERVING: HERITAGE RANCH - 50+ GATED COUNTRY CLUB COMMUNITY FOR SALE IN HERITAGE RANCH

<b>749 BARTON SPRINGS</b> 	<b>344 WRANGLER DR</b> 	<b>1453 CATTLE BARON</b>  <b>VILLA</b>	<b>1458 CATTLE BARON</b>  <b>VILLA</b>
<b>900 MEDINAH DR</b> 	<b>927 OCEAN DR</b>  <b>PENDING</b>	<b>755 BARTON SPRINGS</b>  <b>SOLD</b>	<b>421 BLACK DIAMOND</b>  <b>SOLD</b>

5 ★ CLIENT REVIEW: By: Carol & Tim (Sellers) on 1 Dec 2025

**"BEST REALTOR EVER** - Kevin was an excellent realtor and made the experience of selling our house as easy as possible. He knows the neighborhood and was able to price our house for a quick sale. He went above and beyond in helping us sell our house."



# New Year's SALE



**RECEIVE 2025 PRICING UNTIL FEB. 28TH +**  
**SAVE \$1,500** | **OR** **NO** **INTEREST**  
**ON YOUR NEW BATH OR SHOWER SYSTEM** | **FOR 12 MONTHS**

**UPGRADE YOUR OUTDATED BATHROOM IN AS LITTLE AS A DAY**



Master Plumber • Mark Williams • License # 37134



**Locally owned and Family  
Operated for over 20 Years.  
Born, Bred & Based in Texas.**

**CALL NOW**  
**214.480.4607**

Scan here or  
visit our website  
[www.zintex.com](http://www.zintex.com)  
for complete  
details.



- Bathtub Replacement
- Shower Replacement

- Tub to Shower Conversion
- Walk-in Tub/Accessibility Solutions



**MILITARY DISCOUNT  
SENIOR DISCOUNT  
FIRST RESPONDERS DISCOUNT  
HEALTHCARE WORKER DISCOUNT**

Offer ends 2/28/26. Participating locations only. Cannot be combined with any other advertised offer. Contact your local dealer for financing options.



# Reader-Submitted Photos

## Proof of Fairview's Unique Beauty

Readers again showed us the finery on display in nature with their photo submissions.



**Renee Grebe**, sent us an adorable photo of Sage and Busy greeting a longhorn on their daily walk near the intersection of Stacy and Orr Roads.



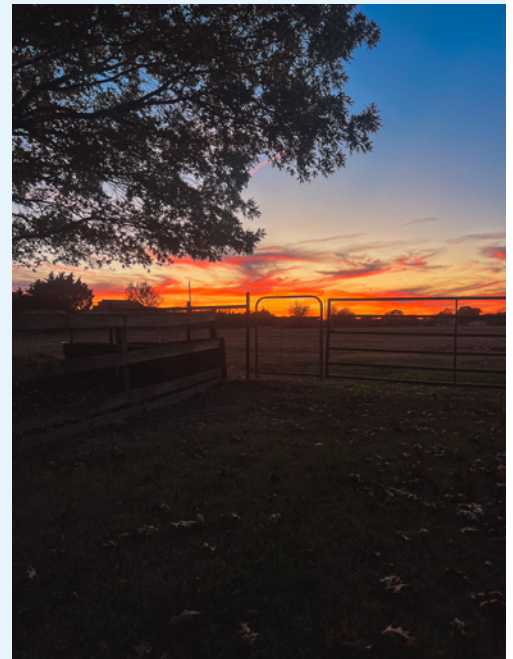
**Rick Saigling**, captured the moment a monarch butterfly took nectar from a hibiscus.



**Michelle Countryman**



**Jessica Platz**



**Jessica Platz**

**Michelle Countryman**, sent us dazzling photos of the Northern Lights, as did new Fairview resident **Jessica Platz**. Jessica also submitted a stunning image of a recent sunset.

**Thank you all** for sharing your moments with us!

*To submit a photo to Fairview Town News, send a high-resolution image to [TownNews@FairviewTexas.org](mailto:TownNews@FairviewTexas.org). We look forward to seeing Fairview through your eyes.*





*Actor of the Month*

**Griffin**

NORTH TEXAS  
PERFORMING ARTS  
FAIRVIEW

## Meet our January Actor of Fairview - **Griffin**

**G**riffin is a 12-year-old 6th grader who caught the acting bug after a family friend invited him to a show at North Texas Performing Arts. The moment he saw the stage, he knew he wanted to be up there too! His first show, "Jungle Book Kids," sparked a love for performing, and 18 productions later, he's still going strong with his NTPA Fairview family.

Griffin's favorite role so far? Nigel in "Matilda" – a hilarious part that let him perform alongside his friends. He also loved playing Kurt Von Trapp in "The Sound of Music" with Garland Summer Musicals, an opportunity he's grateful for all thanks to the training he's received at NTPA.

NTPA feels like Griffin's second home, a place where he can truly be himself and surround himself with wonderful friends and families.

When he's not on stage, you'll find Griffin playing flag football, reading, cooking, hanging out with family and friends, or snacking on Flavor Blasted Goldfish!

This month, Griffin is headed to Atlanta for the Junior Theater Festival, where his NTPA troupe will perform a 15-minute piece from "Alice in Wonderland Jr." for a panel of musical theater pros. The experience has pushed him to grow in dancing, teamwork, and responsibility, and he's having a blast doing it!

» For tickets: [ntpa.org/tickets](http://ntpa.org/tickets)

**Focused. Professional. Reliable.**

**Graff** FOOT • ANKLE & WOUND CARE

Same Day Appointments  
Walk Ins Welcome

From fractures and sports injuries to toenail fungus, wound care, and vein diagnostics, we provide advanced, personalized treatment for all ages!

- ✓ Foot & ankle fracture care
- ✓ Sports & work-related injury treatment
- ✓ Toenail fungus therapy
- ✓ Wound & skin healing
- ✓ Vein & vascular diagnostics

Scan to make an appointment

Call Us Now At **972-403-7733** • **DrGraff.com**  
Plano • Frisco • McKinney • Allen • Dallas • Garland • Coppell

**ALLEN, PLANO & FAIRVIEW • HERITAGE RANCH**

**NEW LEASE LISTING**



**231 Pine Valley Court**  
Heritage Ranch Golf & Country Club

**RE/MAX**  
Dallas Suburbs

**Vicky & Monica Giorgetti Team**

Hall of Fame and Lifetime Achievement  
45 years + in Real Estate with Re/Max

**214-707-9074**  
**469-396-2656**

**vicky.giorgetti@gmail.com**

No One Sells More Real Estate Than Re/Max

**MLS**

**Town & Country**  
ROOFING • CONSTRUCTION • WINDOWS  
YOUR Neighborhood Roofer since 2004

**New Year! New Roof?**

Call our Experts today  
for a Free, No Obligation Inspection



4900 Preston Rd. | Suite 101 | Frisco, TX 75034  
972-377-8188 | [townandcountryroofingdfw.com](http://townandcountryroofingdfw.com)









# Dear Olivia

**OLIVIA ROGERS, RN, BSN, CHPN, CHPO, MBA**, is a leading voice in health care and senior services and the Vice President, Chief Nursing Officer of VNA Texas.



## Dear Olivia,

How can families support loved ones receiving hospice care at home? With the hospice team in place, what is the role of the family?

~Loving Family

## Dear Loving Family,

Thank you for your thoughtful question. It's clear how much you care, and that love is one of the most powerful forms of support a person can receive during hospice care.

When hospice is provided at home, the professional team—nurses, aides, social workers, chaplains, and volunteers—is there to guide and support both the patient and the family. But you, as family, play a central role. You know your loved one's personality, preferences, and values better than anyone. That insight helps the hospice team tailor care in a way that truly honors who they are.

Here are a few meaningful ways families can support their loved one:

1. **Share what makes them unique.** Let the team know about favorite music, spiritual practices,

foods they enjoy, or even how they like to be spoken to. These details help create a comforting and familiar environment.

2. **Create a peaceful space.** Whether your loved one prefers quiet moments with close family or enjoys frequent visits and conversation, your presence helps shape the atmosphere of care.
3. **Encourage legacy projects.** Some families find comfort in helping their loved one create a memory book, record stories, or write letters. Volunteers can assist with these if desired.
4. **Stay connected with the hospice team.** You're not expected to do this alone. Hospice is a partnership, and your observations—changes in mood, comfort, or routines—are incredibly valuable.

Hospice is not a place, but a philosophy of care. It's about living fully and comfortably, surrounded by love. You are not alone—many families face these tender moments, and the hospice team is here to walk alongside you.

~Olivia



## Visiting Nurse Association

Meals on Wheels  
Hospice & Palliative Care

[vnatexas.org](http://vnatexas.org)



To schedule your free in-home informational visit please call (214) 983-9906 or email [gethelp@vnatexas.org](mailto:gethelp@vnatexas.org)  
For volunteer opportunities please call (214) 689-2271 or email [volunteer@vnatexas.org](mailto:volunteer@vnatexas.org)



# Spirit of the Season Felt at **Holiday Event**

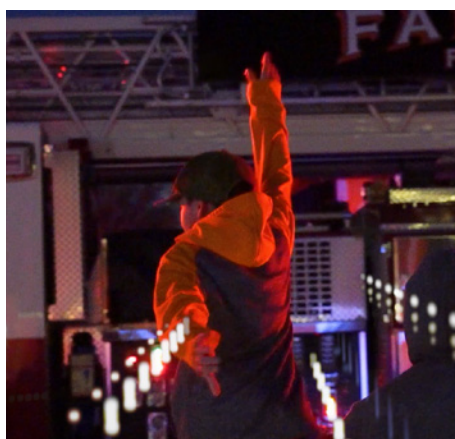
Hundreds braved the cold, windy weather Nov. 29 to take part in the Town's annual tree lighting and Christmas celebration. The evening was highlighted by a pitch-perfect ensemble of the Vocal Majority and a challenging obstacle course designed by American Ninja Warrior all-star Karsten Williams. To view a highlight reel of all the fun, scan the adjacent QR code.



Special thanks to Artistic Endeavors, Rocky Creek Candle Company, Neon Cactus and Revolving Kitchen for providing wonderful treats and activities. Revolving Kitchen and Artistic Endeavors also joined dancers from Pure Movement – along with drummers, a fire engine, ambulance, police vehicles and a horse-drawn carriage carrying Santa and Mayor John Hubbard – in a fun parade that wound its way through Fairview Town Center. *(Thank you, Fairview Town Center for hosting the parade!)*

The entertainment was spectacular, and those who came to the event elevated the feeling of magic and warmth. Guests donated generously to the All Community Outreach North Pole Toy Drive, filling the collection box to the brim. *Thank you!*

We hope you have a wonderful New Year and return to Fairview Town Center throughout the coming seasons to support your neighbors and Fairview businesses!



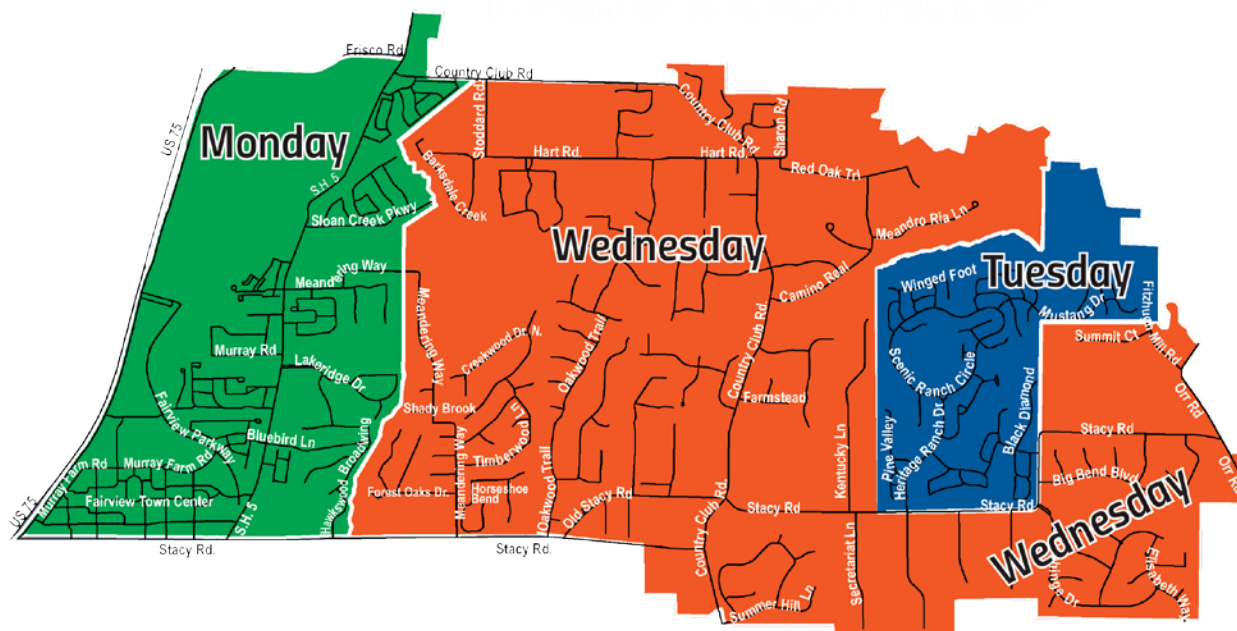
# The ABCs of Weekly Trash and Recycling Collection

Remember these tips to ensure efficient trash and recycling pickup:

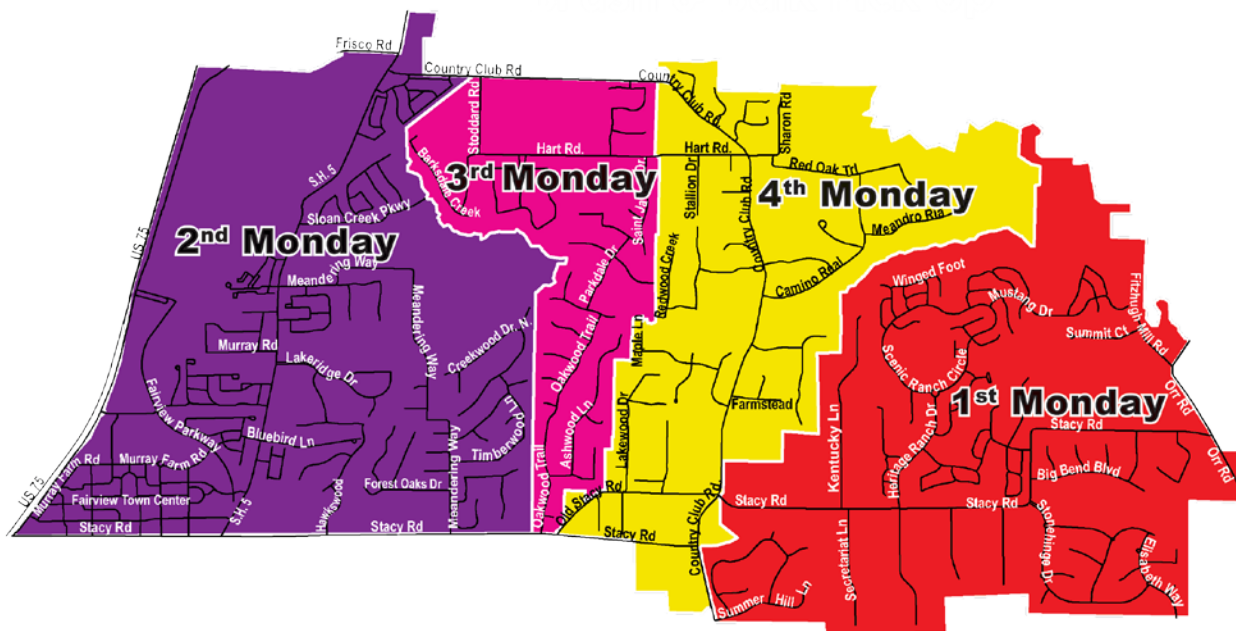
1. **Arrange** carts carefully with handles facing your home, lids open toward the street, and 2 feet of space between carts and other objects.
2. **Be** punctual by placing carts at the edge of the street no earlier than 5 p.m. the day before collection and no later than 7 a.m. on collection day. Roll carts back to your house by 6 a.m. the day after pickup.
3. **Close** lids without clamping or locking. If your trash cart is full, purchase a pink tag for \$2.32 from the Town. Only bags with Town-issued tags will be collected outside carts (except during bulk pickup week).

**Did You Know?** Empty cardboard boxes don't have to go to the landfill. If they're clean and dry, they can be cut down and folded flat to fit inside your recycling cart.

## Trash & Recycling Collection Map



## Brush & Bulk Collection Map





# 2026 Collection Calendar

■ Holiday

<div>January</div> <table><tr><th>SUN</th><th>MON</th><th>TUE</th><th>WED</th><th>THU</th><th>FRI</th><th>SAT</th></tr><tr><td></td><td></td><td></td><td></td><td>1</td><td>2</td><td>3</td></tr><tr><td>1st Monday</td><td>4</td><td>5</td><td>6</td><td>7</td><td>8</td><td>9</td></tr><tr><td>2nd Monday</td><td>11</td><td>12</td><td>13</td><td>14</td><td>15</td><td>16</td></tr><tr><td>3rd Monday</td><td>18</td><td>19</td><td>20</td><td>21</td><td>22</td><td>23</td></tr><tr><td>4th Monday</td><td>25</td><td>26</td><td>27</td><td>28</td><td>29</td><td>30</td></tr></table>							SUN	MON	TUE	WED	THU	FRI	SAT					1	2	3	1st Monday	4	5	6	7	8	9	2nd Monday	11	12	13	14	15	16	3rd Monday	18	19	20	21	22	23	4th Monday	25	26	27	28	29	30	<div>February</div> <table><tr><th>SUN</th><th>MON</th><th>TUE</th><th>WED</th><th>THU</th><th>FRI</th><th>SAT</th></tr><tr><td>1st Monday</td><td>1</td><td>2</td><td>3</td><td>4</td><td>5</td><td>6</td></tr><tr><td>2nd Monday</td><td>8</td><td>9</td><td>10</td><td>11</td><td>12</td><td>13</td></tr><tr><td>3rd Monday</td><td>15</td><td>16</td><td>17</td><td>18</td><td>19</td><td>20</td></tr><tr><td>4th Monday</td><td>22</td><td>23</td><td>24</td><td>25</td><td>26</td><td>27</td></tr></table>							SUN	MON	TUE	WED	THU	FRI	SAT	1st Monday	1	2	3	4	5	6	2nd Monday	8	9	10	11	12	13	3rd Monday	15	16	17	18	19	20	4th Monday	22	23	24	25	26	27	<div>March</div> <table><tr><th>SUN</th><th>MON</th><th>TUE</th><th>WED</th><th>THU</th><th>FRI</th><th>SAT</th></tr><tr><td>1st Monday</td><td>1</td><td>2</td><td>3</td><td>4</td><td>5</td><td>6</td></tr><tr><td>2nd Monday</td><td>8</td><td>9</td><td>10</td><td>11</td><td>12</td><td>13</td></tr><tr><td>3rd Monday</td><td>15</td><td>16</td><td>17</td><td>18</td><td>19</td><td>20</td></tr><tr><td>4th Monday</td><td>22</td><td>23</td><td>24</td><td>25</td><td>26</td><td>27</td></tr></table>							SUN	MON	TUE	WED	THU	FRI	SAT	1st Monday	1	2	3	4	5	6	2nd Monday	8	9	10	11	12	13	3rd Monday	15	16	17	18	19	20	4th Monday	22	23	24	25	26	27														
SUN	MON	TUE	WED	THU	FRI	SAT																																																																																																																																												
				1	2	3																																																																																																																																												
1st Monday	4	5	6	7	8	9																																																																																																																																												
2nd Monday	11	12	13	14	15	16																																																																																																																																												
3rd Monday	18	19	20	21	22	23																																																																																																																																												
4th Monday	25	26	27	28	29	30																																																																																																																																												
SUN	MON	TUE	WED	THU	FRI	SAT																																																																																																																																												
1st Monday	1	2	3	4	5	6																																																																																																																																												
2nd Monday	8	9	10	11	12	13																																																																																																																																												
3rd Monday	15	16	17	18	19	20																																																																																																																																												
4th Monday	22	23	24	25	26	27																																																																																																																																												
SUN	MON	TUE	WED	THU	FRI	SAT																																																																																																																																												
1st Monday	1	2	3	4	5	6																																																																																																																																												
2nd Monday	8	9	10	11	12	13																																																																																																																																												
3rd Monday	15	16	17	18	19	20																																																																																																																																												
4th Monday	22	23	24	25	26	27																																																																																																																																												
<div>April</div> <table><tr><th>SUN</th><th>MON</th><th>TUE</th><th>WED</th><th>THU</th><th>FRI</th><th>SAT</th></tr><tr><td></td><td></td><td></td><td>1</td><td>2</td><td>3</td><td>4</td></tr><tr><td>1st Monday</td><td>5</td><td>6</td><td>7</td><td>8</td><td>9</td><td>10</td></tr><tr><td>2nd Monday</td><td>12</td><td>13</td><td>14</td><td>15</td><td>16</td><td>17</td></tr><tr><td>3rd Monday</td><td>19</td><td>20</td><td>21</td><td>22</td><td>23</td><td>24</td></tr><tr><td>4th Monday</td><td>26</td><td>27</td><td>28</td><td>29</td><td>30</td><td></td></tr></table>							SUN	MON	TUE	WED	THU	FRI	SAT				1	2	3	4	1st Monday	5	6	7	8	9	10	2nd Monday	12	13	14	15	16	17	3rd Monday	19	20	21	22	23	24	4th Monday	26	27	28	29	30		<div>May</div> <table><tr><th>SUN</th><th>MON</th><th>TUE</th><th>WED</th><th>THU</th><th>FRI</th><th>SAT</th></tr><tr><td></td><td></td><td></td><td></td><td></td><td>1</td><td>2</td></tr><tr><td>1st Monday</td><td>3</td><td>4</td><td>5</td><td>6</td><td>7</td><td>8</td></tr><tr><td>2nd Monday</td><td>10</td><td>11</td><td>12</td><td>13</td><td>14</td><td>15</td></tr><tr><td>3rd Monday</td><td>17</td><td>18</td><td>19</td><td>20</td><td>21</td><td>22</td></tr><tr><td>4th Monday</td><td>24</td><td>25</td><td>26</td><td>27</td><td>28</td><td>29</td></tr></table>							SUN	MON	TUE	WED	THU	FRI	SAT						1	2	1st Monday	3	4	5	6	7	8	2nd Monday	10	11	12	13	14	15	3rd Monday	17	18	19	20	21	22	4th Monday	24	25	26	27	28	29	<div>June</div> <table><tr><th>SUN</th><th>MON</th><th>TUE</th><th>WED</th><th>THU</th><th>FRI</th><th>SAT</th></tr><tr><td>1st Monday</td><td></td><td>1</td><td>2</td><td>3</td><td>4</td><td>5</td></tr><tr><td>2nd Monday</td><td>7</td><td>8</td><td>9</td><td>10</td><td>11</td><td>12</td></tr><tr><td>3rd Monday</td><td>14</td><td>15</td><td>16</td><td>17</td><td>18</td><td>19</td></tr><tr><td>4th Monday</td><td>21</td><td>22</td><td>23</td><td>24</td><td>25</td><td>26</td></tr></table>							SUN	MON	TUE	WED	THU	FRI	SAT	1st Monday		1	2	3	4	5	2nd Monday	7	8	9	10	11	12	3rd Monday	14	15	16	17	18	19	4th Monday	21	22	23	24	25	26							
SUN	MON	TUE	WED	THU	FRI	SAT																																																																																																																																												
			1	2	3	4																																																																																																																																												
1st Monday	5	6	7	8	9	10																																																																																																																																												
2nd Monday	12	13	14	15	16	17																																																																																																																																												
3rd Monday	19	20	21	22	23	24																																																																																																																																												
4th Monday	26	27	28	29	30																																																																																																																																													
SUN	MON	TUE	WED	THU	FRI	SAT																																																																																																																																												
					1	2																																																																																																																																												
1st Monday	3	4	5	6	7	8																																																																																																																																												
2nd Monday	10	11	12	13	14	15																																																																																																																																												
3rd Monday	17	18	19	20	21	22																																																																																																																																												
4th Monday	24	25	26	27	28	29																																																																																																																																												
SUN	MON	TUE	WED	THU	FRI	SAT																																																																																																																																												
1st Monday		1	2	3	4	5																																																																																																																																												
2nd Monday	7	8	9	10	11	12																																																																																																																																												
3rd Monday	14	15	16	17	18	19																																																																																																																																												
4th Monday	21	22	23	24	25	26																																																																																																																																												
<div>July</div> <table><tr><th>SUN</th><th>MON</th><th>TUE</th><th>WED</th><th>THU</th><th>FRI</th><th>SAT</th></tr><tr><td></td><td></td><td></td><td>1</td><td>2</td><td>3</td><td>4</td></tr><tr><td>1st Monday</td><td>5</td><td>6</td><td>7</td><td>8</td><td>9</td><td>10</td></tr><tr><td>2nd Monday</td><td>12</td><td>13</td><td>14</td><td>15</td><td>16</td><td>17</td></tr><tr><td>3rd Monday</td><td>19</td><td>20</td><td>21</td><td>22</td><td>23</td><td>24</td></tr><tr><td>4th Monday</td><td>26</td><td>27</td><td>28</td><td>29</td><td>30</td><td>31</td></tr></table>							SUN	MON	TUE	WED	THU	FRI	SAT				1	2	3	4	1st Monday	5	6	7	8	9	10	2nd Monday	12	13	14	15	16	17	3rd Monday	19	20	21	22	23	24	4th Monday	26	27	28	29	30	31	<div>August</div> <table><tr><th>SUN</th><th>MON</th><th>TUE</th><th>WED</th><th>THU</th><th>FRI</th><th>SAT</th></tr><tr><td></td><td></td><td></td><td></td><td></td><td></td><td>1</td></tr><tr><td>1st Monday</td><td>2</td><td>3</td><td>4</td><td>5</td><td>6</td><td>7</td></tr><tr><td>2nd Monday</td><td>9</td><td>10</td><td>11</td><td>12</td><td>13</td><td>14</td></tr><tr><td>3rd Monday</td><td>16</td><td>17</td><td>18</td><td>19</td><td>20</td><td>21</td></tr><tr><td>4th Monday</td><td>23</td><td>24</td><td>25</td><td>26</td><td>27</td><td>28</td></tr></table>							SUN	MON	TUE	WED	THU	FRI	SAT							1	1st Monday	2	3	4	5	6	7	2nd Monday	9	10	11	12	13	14	3rd Monday	16	17	18	19	20	21	4th Monday	23	24	25	26	27	28	<div>September</div> <table><tr><th>SUN</th><th>MON</th><th>TUE</th><th>WED</th><th>THU</th><th>FRI</th><th>SAT</th></tr><tr><td></td><td></td><td>1</td><td>2</td><td>3</td><td>4</td><td>5</td></tr><tr><td>1st Monday</td><td>6</td><td>7</td><td>8</td><td>9</td><td>10</td><td>11</td></tr><tr><td>2nd Monday</td><td>13</td><td>14</td><td>15</td><td>16</td><td>17</td><td>18</td></tr><tr><td>3rd Monday</td><td>20</td><td>21</td><td>22</td><td>23</td><td>24</td><td>25</td></tr><tr><td>4th Monday</td><td>27</td><td>28</td><td>29</td><td>30</td><td>31</td><td></td></tr></table>							SUN	MON	TUE	WED	THU	FRI	SAT			1	2	3	4	5	1st Monday	6	7	8	9	10	11	2nd Monday	13	14	15	16	17	18	3rd Monday	20	21	22	23	24	25	4th Monday	27	28	29	30	31	
SUN	MON	TUE	WED	THU	FRI	SAT																																																																																																																																												
			1	2	3	4																																																																																																																																												
1st Monday	5	6	7	8	9	10																																																																																																																																												
2nd Monday	12	13	14	15	16	17																																																																																																																																												
3rd Monday	19	20	21	22	23	24																																																																																																																																												
4th Monday	26	27	28	29	30	31																																																																																																																																												
SUN	MON	TUE	WED	THU	FRI	SAT																																																																																																																																												
						1																																																																																																																																												
1st Monday	2	3	4	5	6	7																																																																																																																																												
2nd Monday	9	10	11	12	13	14																																																																																																																																												
3rd Monday	16	17	18	19	20	21																																																																																																																																												
4th Monday	23	24	25	26	27	28																																																																																																																																												
SUN	MON	TUE	WED	THU	FRI	SAT																																																																																																																																												
		1	2	3	4	5																																																																																																																																												
1st Monday	6	7	8	9	10	11																																																																																																																																												
2nd Monday	13	14	15	16	17	18																																																																																																																																												
3rd Monday	20	21	22	23	24	25																																																																																																																																												
4th Monday	27	28	29	30	31																																																																																																																																													
<div>October</div> <table><tr><th>SUN</th><th>MON</th><th>TUE</th><th>WED</th><th>THU</th><th>FRI</th><th>SAT</th></tr><tr><td></td><td></td><td></td><td></td><td>1</td><td>2</td><td>3</td></tr><tr><td>1st Monday</td><td>4</td><td>5</td><td>6</td><td>7</td><td>8</td><td>9</td></tr><tr><td>2nd Monday</td><td>11</td><td>12</td><td>13</td><td>14</td><td>15</td><td>16</td></tr><tr><td>3rd Monday</td><td>18</td><td>19</td><td>20</td><td>21</td><td>22</td><td>23</td></tr><tr><td>4th Monday</td><td>25</td><td>26</td><td>27</td><td>28</td><td>29</td><td>30</td></tr></table>							SUN	MON	TUE	WED	THU	FRI	SAT					1	2	3	1st Monday	4	5	6	7	8	9	2nd Monday	11	12	13	14	15	16	3rd Monday	18	19	20	21	22	23	4th Monday	25	26	27	28	29	30	<div>November</div> <table><tr><th>SUN</th><th>MON</th><th>TUE</th><th>WED</th><th>THU</th><th>FRI</th><th>SAT</th></tr><tr><td>1st Monday</td><td>1</td><td>2</td><td>3</td><td>4</td><td>5</td><td>6</td></tr><tr><td>2nd Monday</td><td>8</td><td>9</td><td>10</td><td>11</td><td>12</td><td>13</td></tr><tr><td>3rd Monday</td><td>15</td><td>16</td><td>17</td><td>18</td><td>19</td><td>20</td></tr><tr><td>4th Monday</td><td>22</td><td>23</td><td>24</td><td>25</td><td>26</td><td>27</td></tr></table>							SUN	MON	TUE	WED	THU	FRI	SAT	1st Monday	1	2	3	4	5	6	2nd Monday	8	9	10	11	12	13	3rd Monday	15	16	17	18	19	20	4th Monday	22	23	24	25	26	27	<div>December</div> <table><tr><th>SUN</th><th>MON</th><th>TUE</th><th>WED</th><th>THU</th><th>FRI</th><th>SAT</th></tr><tr><td></td><td></td><td>1</td><td>2</td><td>3</td><td>4</td><td>5</td></tr><tr><td>1st Monday</td><td>6</td><td>7</td><td>8</td><td>9</td><td>10</td><td>11</td></tr><tr><td>2nd Monday</td><td>13</td><td>14</td><td>15</td><td>16</td><td>17</td><td>18</td></tr><tr><td>3rd Monday</td><td>20</td><td>21</td><td>22</td><td>23</td><td>24</td><td>25</td></tr><tr><td>4th Monday</td><td>27</td><td>28</td><td>29</td><td>30</td><td>31</td><td></td></tr></table>							SUN	MON	TUE	WED	THU	FRI	SAT			1	2	3	4	5	1st Monday	6	7	8	9	10	11	2nd Monday	13	14	15	16	17	18	3rd Monday	20	21	22	23	24	25	4th Monday	27	28	29	30	31								
SUN	MON	TUE	WED	THU	FRI	SAT																																																																																																																																												
				1	2	3																																																																																																																																												
1st Monday	4	5	6	7	8	9																																																																																																																																												
2nd Monday	11	12	13	14	15	16																																																																																																																																												
3rd Monday	18	19	20	21	22	23																																																																																																																																												
4th Monday	25	26	27	28	29	30																																																																																																																																												
SUN	MON	TUE	WED	THU	FRI	SAT																																																																																																																																												
1st Monday	1	2	3	4	5	6																																																																																																																																												
2nd Monday	8	9	10	11	12	13																																																																																																																																												
3rd Monday	15	16	17	18	19	20																																																																																																																																												
4th Monday	22	23	24	25	26	27																																																																																																																																												
SUN	MON	TUE	WED	THU	FRI	SAT																																																																																																																																												
		1	2	3	4	5																																																																																																																																												
1st Monday	6	7	8	9	10	11																																																																																																																																												
2nd Monday	13	14	15	16	17	18																																																																																																																																												
3rd Monday	20	21	22	23	24	25																																																																																																																																												
4th Monday	27	28	29	30	31																																																																																																																																													

## Avoid Missed Trash Collections

Republic Services has added more drivers, which allows collection of trash and recycling to occur more efficiently. Because of the change, collection trucks may reach your street earlier than in the past.

Please ensure all trash and recycling carts are at the curb no later than 7 a.m. on scheduled collection days to avoid a missed collection.

*Other things to keep in mind:*

- All trash going to the landfill should be contained inside securely tied plastic bags, and all bags should fit inside your solid blue cart with the lid closed.
- Pink tags may be purchased from the Town for \$2.32 each and placed on excess bags that don't fit inside your trash cart. Other than during bulk collection weeks, bags sitting outside of carts without a Town-issued tag won't be collected.
- Recyclables should be placed loose, without bagging, into recycling carts, which are either solid green or dark blue with a lighter blue lid.
- Clean and dry empty cardboard boxes may be cut down and folded flat to fit inside recycling bins.
- Never clamp or lock lids on trash or recycling carts.
- Place carts with handles facing the house and lids opening toward the street or alley.
- Carts must be placed 2 to 3 feet apart and away from objects that may obstruct the pickup arm.

To report a damaged cart or request collection for a missed pickup, contact Republic Services at 972-422-2341 or [RepublicServices.com/Customer-Support](https://www.RepublicServices.com/Customer-Support).

# VIKING



Five Star  
Award Winning Agency

Travel Leaders Presidents Circle  
Celebrity Cruises Iconic Advisors  
Viking Cruises Platinum Circle

*Brandt Travel offers BEST PRICING and BEST SERVICE*

We work for **YOU** to ensure a successful journey with many years of experience caring for our travelers like family

*Why Brandt Travel...*



**Scan for Specials**




**Your Leisure Travel Experts**

Call: 866-242-0500 EXT 1

Email: [info@brandt-travel.com](mailto:info@brandt-travel.com)

Website: [www.brandt-travel.com](http://www.brandt-travel.com)

Award-Winning Service  
YOUR Travel Advocate  
Top Agency for Viking Cruises  
Exclusive Savings  
Booking Incentives  
**Our Service Is Free**  
Customers  Us  
Locally Owned and Operated

**Work with All Major Travel Suppliers**